

Yidao 倚道

邯郸市倚道金属制品有限公司
HANDAN YIDAO METAL PRODUCTS CO.,LTD

Quality · Reliability · Innovation

精益求精 以质取胜



About *Yidao*

Established in 2014 ,Yidao Metal is now a leading enterprise focusing on research, production, sales for high strength full thread bar and accessories and related construction products.

High Strength Thread Bar

Diameter 15, 20, 25,28, 32, 36, 40, 50, 63.5, 75mm

Grade 500/ 630,670/ 800,830/ 1030,930/ 1080,1080/ 1230Mpa.

Accessory

Hex Nut, Spherical Hex Nut, Rock Bolt, Domed Nut, Anchor Bolt, Couplers, Spring Bar, Bearing Plate, Plate Washer, etc.

Application

Our products are widely used in Post-Tensioning, Geotechnical, Formworks, Marine Tie, Formwork Ties,Ground Anchors, Soil Nailing, Tunneling, Mining.



邯郸市倚道金属制品有限公司，地处全国最大的标准件生产基地，地理位置优越，交通便利，是一家致力于高标准紧固件生产、科研、销售于一体的大型综合企业。

公司主营精轧螺纹钢，精轧螺纹钢配套锚具，精轧螺母，连接器，螺旋筋，钢绞线锚具，高强度钢结构螺栓，钢结构扭剪型螺栓，地脚螺栓预埋件等产品。

自1995年建厂开始，就把产品质量作为企业的生命线，选用优质钢材，引进先进的生产设备和工艺，聘用高级技术人才，工人全部培训上岗，道道工序严把质量关。公司拥有大型热锻设备、攻丝机、冲床、多工位车床、全自动网带炉、拉力机、硬度仪等检测设备。

CORPORATE CULTURE 企业文化

Honest
诚信做人

Focus
认真做事

Smart Working
努力进取

Innovation
勇于创新

Team Work
团队第一

Safe Production
安全生产

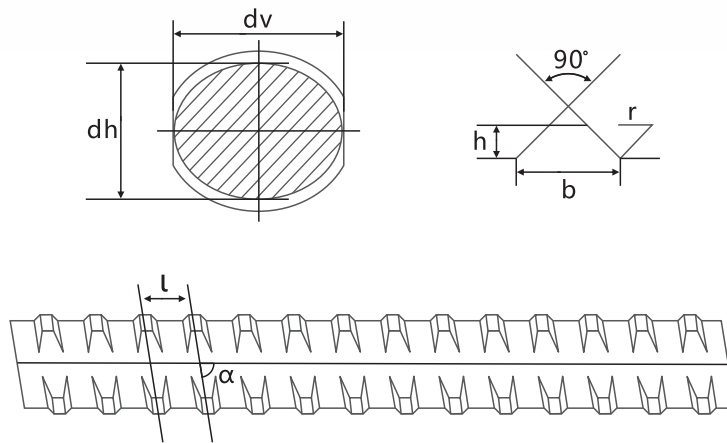
Index

目录

About Yidao 公司简介	01	Accessory Production 锚具生产	19
Yidao Thread Bar System 精轧螺纹钢	04	Quenched & Tempered 淬火回火	20
Flat Hex Nut 平螺母	07	Tensile Test 拉力测试	20
Spherical Hex Nut 锥螺母	07	Production Process of Epoxy Coated Thread Bar 环氧树脂涂层钢筋生产流程	21
Anchor Plate 平垫板	08	Soil Nail & DCP 土钉与双层防腐	23
Spherical Anchor Plate 锥垫板	08	Yidao Stress Bar Hot Rolled Left-Hand Thread 倚道左旋精轧螺纹钢	25
Coupler 连接器	09	Domed Nut / Plate 左旋钢筋锚具	26
Lock Nut 锁母	09	Anchor Bolt/Smooth Thread Bar/High Strength Thread rod 风电锚栓/高强度双头	27
Domed Nut 蘑菇头螺母	10	Anchor Bolt 地脚螺栓	27
Domed Plate 托盘	11	T Thread Rod T 型扣丝杆	28
Spacer/Centralizer 居中器	11	High Strength Thread Bar 高强度圆弧丝杆	28
Yidao Accessories 精轧螺纹钢锚具	12	Packing & Shipping 包装发货	29
Expansion Shell 膨胀配件	13	Application 应用介绍	30
Hot Rolled Formwork Tie Rod 15/17mm 20/22mm 热轧模板拉杆15/17mm 20/22mm	15	Enterprise Qualification 企业资质	33
Formwork Accessory 模板拉杆配件	16	Job Reference 工程案例	35
Value Added Services-Systems & Solution 精轧螺纹钢附加服务及应用	17	Global markets 全球市场	43
Thread Bar Production 精轧螺纹钢生产	19		

Yidao Thread Bar System

精轧螺纹钢



Yidao stress bar
Hot rolled-Right hand thread

Diameter /mm	dh/mm		dv/mm		h/mm		b/mm		l/mm		r/mm	α
	Size	Tolerance	Size	Tolerance	Size	Tolerance	Size	Tolerance	Size	Tolerance		
15	14.7	± 0.2	14.4	± 0.5	1.0	± 0.2	4.2	± 0.3	10.0	± 0.2	0.5	78.5°
20	20.0	± 0.4	20.0	+0.4-0.8	1.3	± 0.3	4.8	± 0.5	10.0	± 0.2	1.2	80.5°
25	25.0	± 0.4	25.0	+0.4-0.8	1.6	± 0.3	6.0	± 0.5	12.0	± 0.2	1.5	81°
28	27.3	± 0.4	26.8	+0.4-0.8	1.8	± 0.3	6.5	± 0.3	14.0	± 0.3	2.0	81.5°
32	32.0	± 0.5	32.0	+0.5-1.2	2.0	± 0.4	7.0	± 0.5	16.0	± 0.2	2.0	81.5°
36	36.0	± 0.5	36.0	+0.5-1.2	2.2	± 0.4	8.0	± 0.5	18.0	± 0.3	2.5	81.5°
40	40.0	± 0.5	40.0	+0.5-1.2	2.5	± 0.5	8.0	± 0.5	20.0	± 0.3	2.5	81.5°
50	50.0	± 0.5	50.0	+0.5-1.2	3.0	-0.5	9.0	± 0.5	24.0	± 0.3	2.5	81.8°
63.5	63.5	± 0.5	63.5	+0.5-1.2	3.0	± 0.6	12.0	± 0.5	22.0	± 0.4	2.5	84°
75	75	± 0.5	75	+0.4-1.2	3.0	± 0.6	12.0	± 0.4	20.0	± 0.4	2.5	85°

Yidao Thread Bar System

精轧螺纹钢



Mechanical Properties of High Strength Thread Bar

精轧螺纹钢的机械性能

Mechanical Properties										
Diameter /mm	Cross-sectional area/mm ²	Weight (kg/m)	PSB500				PSB670			
			Min Yield Stress/Load		Min Ultimate Stress/Load		Min Yield Stress/Load		Min Ultimate Stress/Load	
			Mpa	KN	Mpa	KN	Mpa	KN	Mpa	KN
15	177	1.4	500	89	630	112	670	119	800	142
20	314	2.47	500	157	630	198	670	210	800	251
25	491	4.1	500	246	630	309	670	329	800	393
28	616	5.1	500	308	630	388	670	413	800	493
32	804	6.65	500	402	630	507	670	539	800	643
36	1018	8.41	500	509	630	641	670	682	800	814
40	1257	10.34	500	629	630	792	670	842	800	1006
50	1963	16.28	500	982	630	1237	670	1315	800	1570
63.5	3167	26.5	500	1584	630	1995	670	2122	800	2534
75	4418	36.9	500	2209	630	2783	670	2960	800	3534
Elongation at fracture A/%			≥10				≥5			
Total Elongation at max force Agt/%			≥3.5							
Relaxation at 1000h			≤4							
Modulus of elasticity/Mpa			2×10 ⁵							

Yidao Thread Bar System

精轧螺纹钢

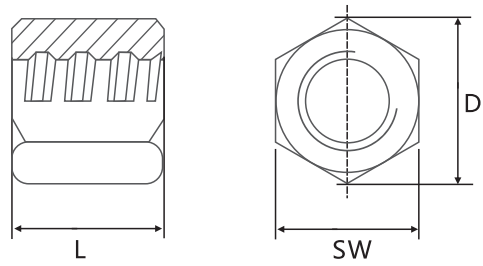


Mechanical Properties of High Strength Thread Bar

精轧螺纹钢的机械性能

Mechanical Properties														
Diameter /mm	Cross-sectional area/mm ²	Weight (kg/m)	PSB830				PSB930				PSB1080			
			Min Yield Stress/Load		Min Ultimate Stress/Load		Min Yield Stress/Load		Min Ultimate Stress/Load		Min Yield Stress/Load		Min Ultimate Stress/Load	
			Mpa	KN	Mpa	KN	Mpa	KN	Mpa	KN	Mpa	KN	Mpa	KN
15	177	1.4	830	147	1030	182	930	165	1080	191	1080	191	1230	218
20	314	2.47	830	261	1030	323	930	292	1080	339	1080	339	1230	386
25	491	4.1	830	408	1030	506	930	457	1080	530	1080	530	1230	604
28	616	5.1	830	511	1030	643	930	573	1080	665	1080	665	1230	758
32	804	6.65	830	667	1030	828	930	748	1080	868	1080	868	1230	989
36	1018	8.41	830	845	1030	1049	930	947	1080	1099	1080	1099	1230	1252
40	1257	10.34	830	1043	1030	1295	930	1169	1080	1358	1080	1358	1230	1546
50	1963	16.28	830	1629	1030	2022	930	1826	1080	2120	1080	2120	1230	2414
63.5	3167	26.5	830	2629	1030	3262	930	2945	1080	3420	1080	3420	1230	3895
75	4418	36.9	830	3667	1030	4551	930	4109	1080	4771	1080	4471	1230	5434
Elongation at fracture A/%			≥7				≥7				≥6			
Total Elongation at max force Agt/%			≥3.5											
Relaxation at 1000h			≤4											
Modulus of elasticity/Mpa			2×10 ⁵											

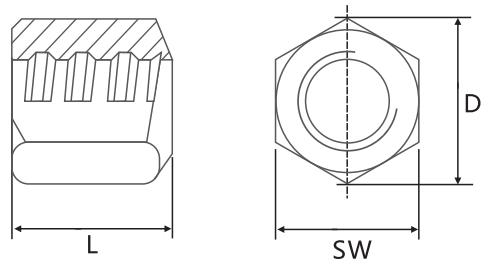
Flat Hex Nut 平螺母



材料/Material 45#,40Cr

Dia [mm]	SW [mm]	L [mm]	D [mm]	Weight [kg]
15	30	50	34.5	0.22
15	30	100	34.5	0.45
20	32	45	37	0.17
20	36	60	69	0.36
25	50	60	55	0.70
28	50	60	55	0.70
32	65	72	75	1.40
36	65	80	75	1.45
40	70	100	81	2.12
50	80	110	92	3.10
63.5	100	115	130.2	4.72
75	115	160	132.2	8.84

Spherical Hex Nut 锥螺母

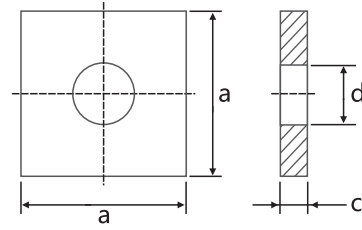


材料/Material 45#,40Cr

Dia [mm]	SW [mm]	L [mm]	D [mm]	Weight [kg]
25	50	60	55	0.70
28	50	60	55	0.70
32	65	72	75	1.40
36	65	80	75	1.45
40	70	100	81	2.12
50	80	110	92	3.10
63.5	100	115	130.2	4.72
75	115	160	132.2	8.84

Surface: Zinc, HDG, Epoxy

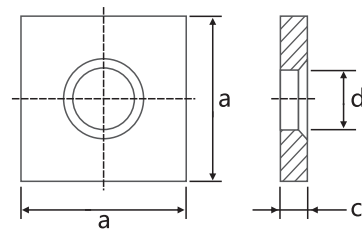
Anchor Plate 平垫板



材料/Material Q235B,Q345B

Dia [mm]	a [mm]	c [mm]	Material	Weight [kg]
15	100	8	Q235	0.6
20	100	30	Q235	2.2
25	150	35	Q235	5.9
32	180	40	Q235	9.6
36	200	45	Q235	13.4
40	220	50	Q235	18.0
50	240	55	Q235	33.6
63.5	325	70	Q235	56.3

Spherical Anchor Plate 锥垫板

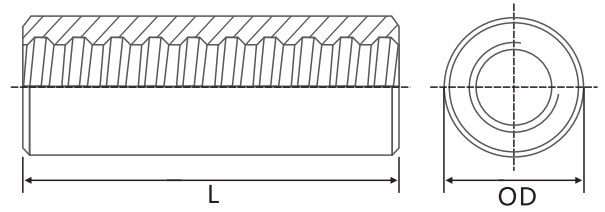


材料/Material Q235B,Q345B

Dia [mm]	a [mm]	c [mm]	Material	Weight [kg]
15	100	8	Q235	0.6
20	100	30	Q235	2.2
25	150	35	Q235	5.9
32	180	40	Q235	9.6
36	200	45	Q235	13.4
40	220	50	Q235	18.0
50	240	55	Q235	33.6
63.5	325	70	Q235	56.3

Surface: Zinc, HDG, Epoxy

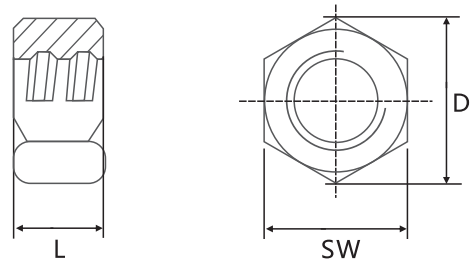
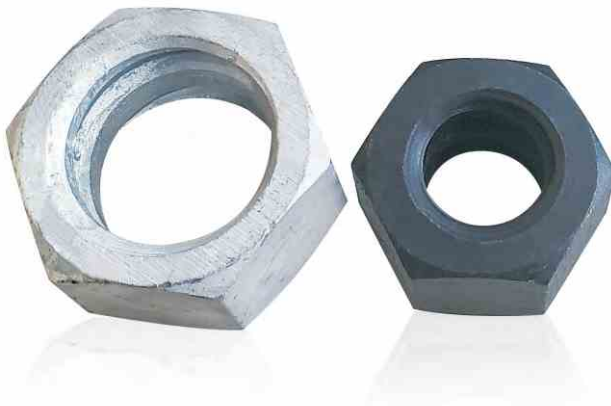
Coupler 连接器



材料/Material 45#,40Cr,35CrMo,42CrMo

D [mm]	D [mm]	L [mm]	Weight [kg]
15	38	110	0.8
20	38	110	0.7
25	50	132	1.35
32	60	168	2.4
36	70	200	3.6
40	75	220	5.2
50	90	270	9.8
63.5	102	260	10.22
75	110	280	11.19

Lock Nut 锁母



材料/Material 45#,40Cr

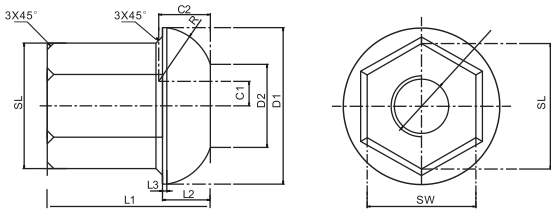
Dia [mm]	SW [mm]	L [mm]	D [mm]	Weight [kg]
15	30	30	34.5	0.13
25	50	35	58	0.40
32	60	34	70	0.70
36	65	36	75	0.75
40	70	46	80	0.92
50	80	50	92	1.27

Surface: Zinc, HDG, Epoxy



Domed Nut (Heavy Duty) 蘑菇头螺母

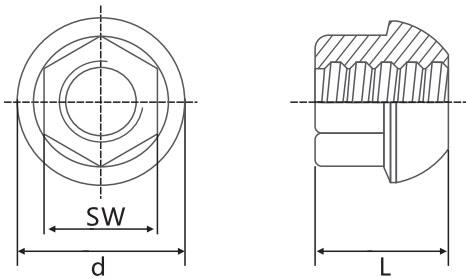
材料/Material 45#,40Cr



Dia [mm]	Dimension [mm]				Weight [kg]
	SW	D1	L1	L2	
25	50	72	75	22	1.14
32	60	80	90	28	1.79
36	65	90	100	30	2.34
40	70	100	115	32	3.08
50	85	120	145	36	5.38

Domed Nut (Light Duty) 蘑菇头螺母

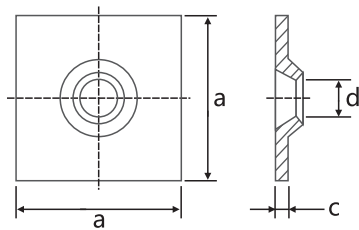
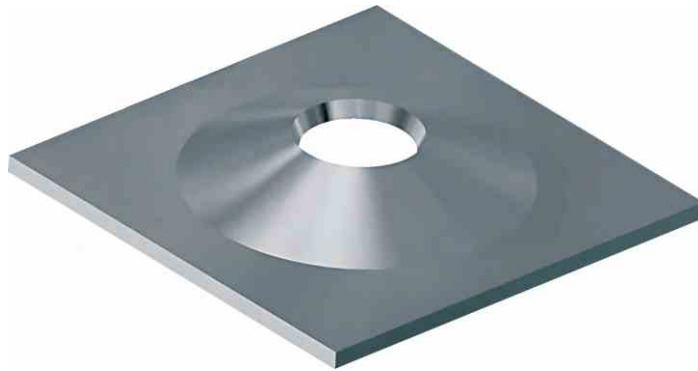
材料/Material 45#



Dia [mm]	Material	SW [mm]	L [mm]	d [mm]	Weight [kg]
20	45#	36	41	49	0.32
25	45#	41	45	55	0.37
28	45#	41	54	62	0.40
32	45#	50	60	65	0.68
40	45#	50	70	88	1.30

Surface: Zinc, HDG, Epoxy

Domed Plate 托盘



材料/Material Q235B,Q345B

Dia [mm]	a [mm]	c [mm]	Material	Weight [kg]
15	100	8	Q235	0.6
20	100	10	Q235	0.75
25	150	12	Q235	2.0
32	180	15	Q235	3.5

Surface: Zinc, HDG, Epoxy

Spacer/Centralizer 居中器

Dia : 25-50mm



Yidao Accessories
精轧螺纹钢锚具



For details information on accessories,
refer to individual data sheet.

Surface: Zinc, HDG, Epoxy

Expansion Shell-I

膨胀配件

样式 Style	适配尺寸 Proper Size	螺母外径 Outer DiameterOf Nut	初始拉拔力 Capacity	外形尺寸 BoundaryDimension
	φ 36	3/4" M20.16	14 Ton	φ 34×122
	φ 45	M24、3/4" 20/25mm	20 Ton	φ 34×135
	φ 57	M24、3/4" 20/25/32mm	20 Ton	φ 54×112
	φ 57	M24、3/4" 20/25/32mm	20 Ton	φ 54×182

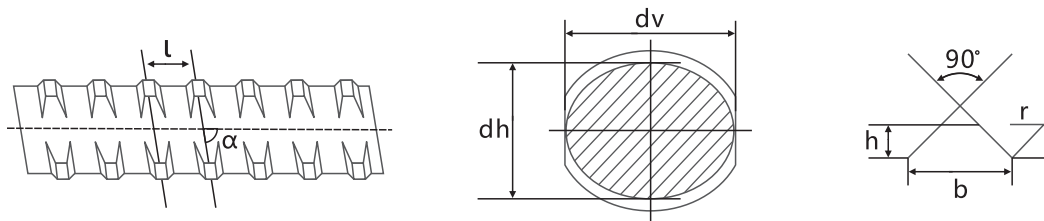
Expansion Shell- II

膨胀配件

样式 Style	适配尺寸 Proper Size	螺母外径 Outer DiameterOf Nut	初始拉拔力 Capacity	外形尺寸 BoundaryDimension
	φ 45	M24、 3/4" 20/25/32mm	14 Ton	φ 41×122
	φ 38	3/4" M20 16mm	14 Ton	φ 36×148
	φ 45	M24、 3/4" 20/25mm	20 Ton	φ 43×135
	φ 57	32mm	20 Ton	φ 47×135

Hot Rolled Formwork Tie Rod 15/17mm 20/22mm

热轧模板拉杆15/17mm 20/22mm



Dia	dh/mm	dv/mm	h/mm	b/mm	l/mm	r	a
15	14.70 ±0.2	14.40 ±0.5	1.00 ±0.2	4.20 ±0.3	10.00 ±0.2	0.5	78.5°
20	19.50 ±0.5	14.40 ±0.5	1.30 ±0.3	4.50 ±0.5	10.00 ±0.3	—	—

Diameter [mm]	15	20
Yield/Tensile [Mpa]	830/1030	830/1030
Yield Tensile [KN]	147/182	261/323
Elongation [%]	7	7
Weight [kg/m]	1.4	2.47

Application

Tie Rod
Formwork
Scaffolding
Hook Anchor

Surface Treatment

Zinc Plated
Hot Dipped
Galvanized
Epoxy coating

Formwork Accessory

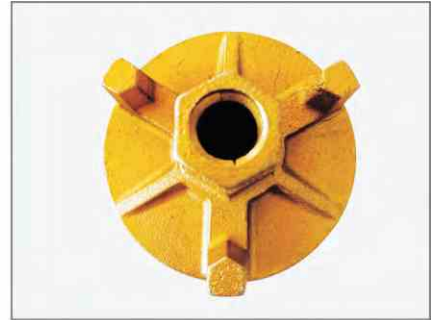
模板拉杆配件



Hex Nut
YD-FA1104-1106



Wing Nut
YD-FA1107



Round Nut
YD-FA1108



half Nut
YD-FA1109



Round Nut
YD-FA1110



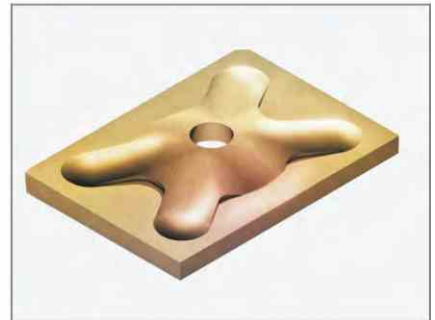
Water Stopper
YD-FA1111



Combine Nut Plate
YD-FA1112



Steel Cone
YD-FA1113



Steel Plate
YD-FA1114

We can also produce as your drawing.

Value Added Services-Systems & Solution- I

精轧螺纹钢附加服务及应用



- Cutting of thread bars to required length
切割服务



- Anti-Corrosion protection
防锈处理



- Bending of bars
钢筋折弯

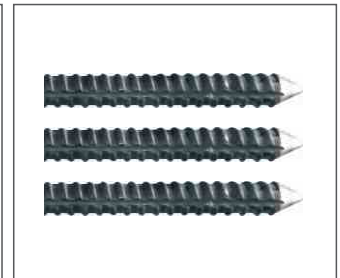
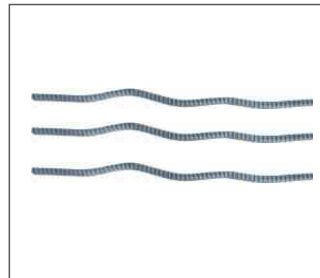
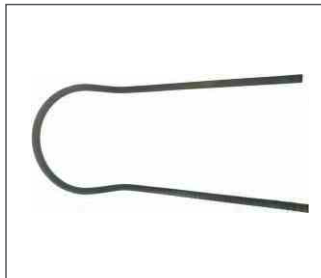
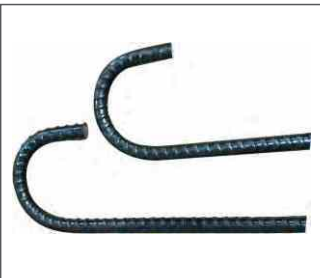


- Customization for Special Diameter
特殊尺寸定轧

Cutting of thread bars to required length



Bending of bars



Customization for Special Diameter

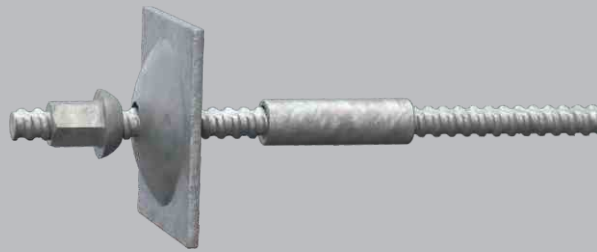


Value Added Services-Systems & Solution- II

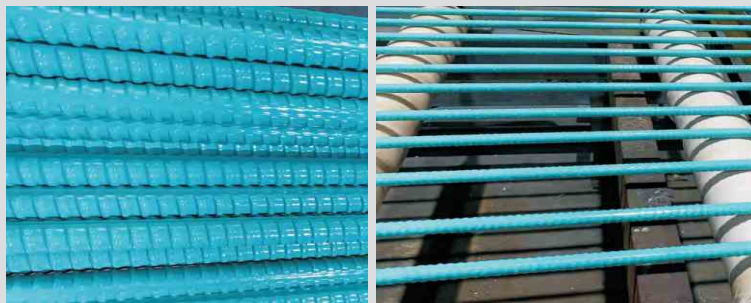
精轧螺纹钢附加服务及应用

Anti-Corrosion Protection System

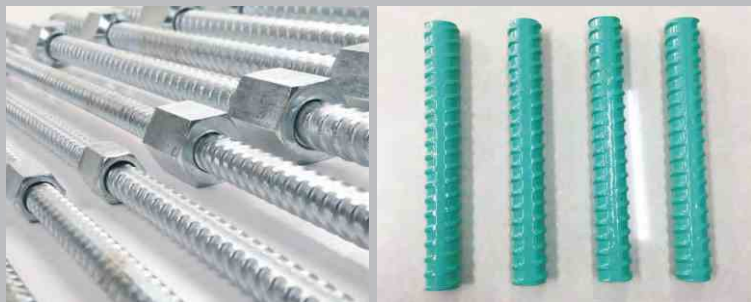
- Hot Dip Galvanized
Thickness around $\geq 85\mu\text{m}$



- Epoxy Coated
Thickness around
220-400 μm



- Zinc Plated
Hot Dipped Galvanized
Epoxy
DCP



- Double Corrosion
Protection



Thread Bar Production 精轧螺纹钢生产



Hot Rolling 热轧

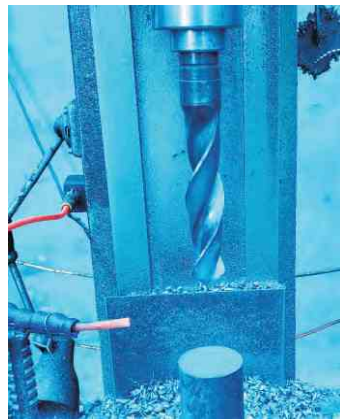


Automatic processing line 全自动钢筋升级线

Accessory Production 锚具生产



Peeling 车外皮



Drilling 钻孔



Hot Forging 热锻



Sawing 锯料



Punching 磕料

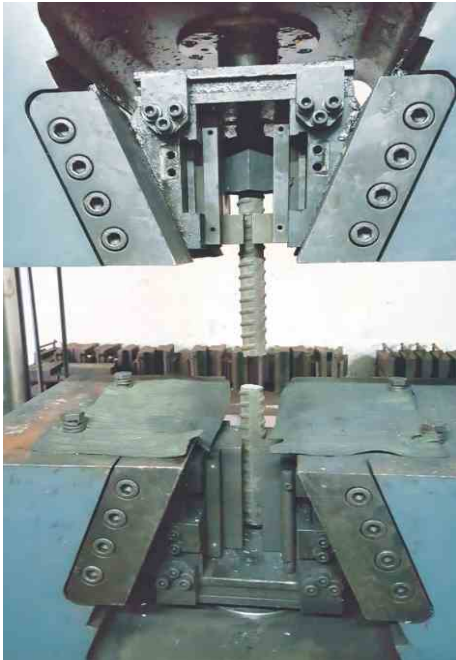


Gas Cutting 气割

Quenched & Tempered
淬火回火

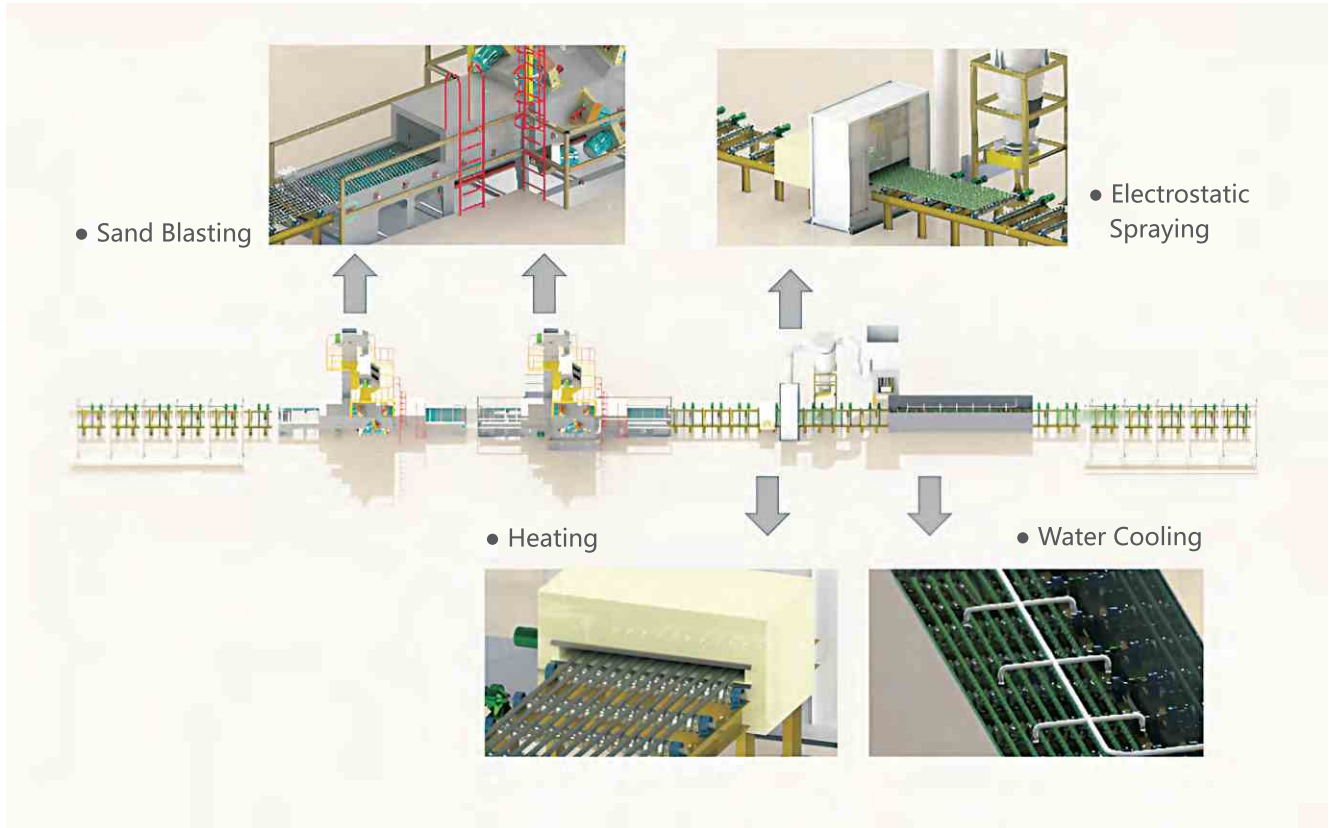


Tensile Test
拉力测试



Production Process of Epoxy Coated Thread Bar

环氧树脂涂层钢筋生产流程



Sand Blasting→Thread bar heated to 230°C→Electrostatic Spraying→Heat Curing→ Water Cooling

Normally the bar should be fully cleaned, such as sand-blasting, to keep a rough surface which is helpful to enhance bond between the epoxy resin and steel. Then the bar is heated to approximately 230°C (450°F) and passed through a powder spray booth where electrically charged epoxy particles are attracted to the steel. The coating then undergoes a cross-linking process to form a uniform barrier over the steel.

Reference Standards :

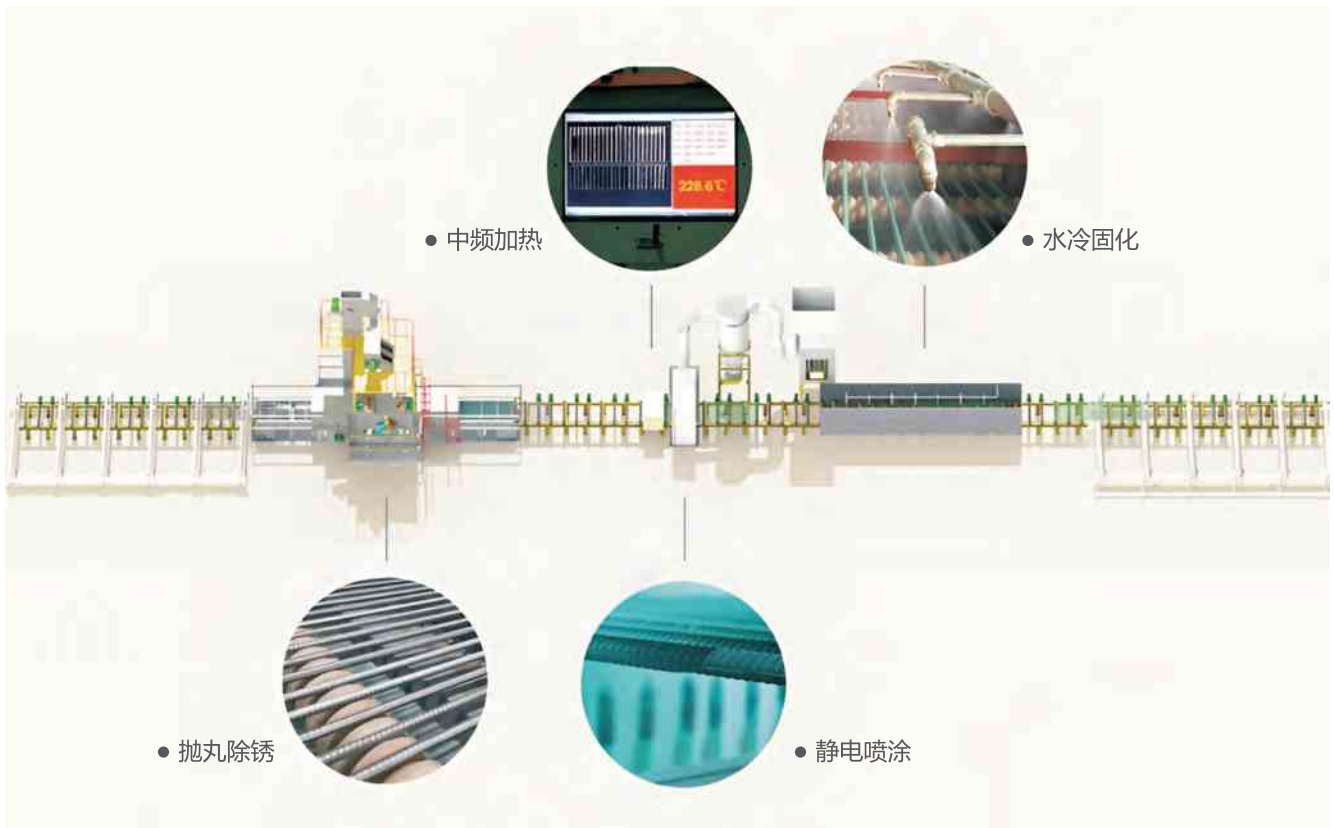
GB/T 25826-2010

A775/A775M – 19

IS 13620 -1993

Production Process of Epoxy Coated Thread Bar

环氧树脂涂层钢筋生产流程



生产流程：钢筋表面除锈、打毛做净化处理→钢筋加热到 230°C→静电喷涂→高温涂层固化
→净水冷却→质检合格出厂

涂层一般采用环氧树脂粉末以静电喷涂方法制做。

将普通钢筋表面进行除锈、打毛等处理后加热到 230°C 左右。再将带电的环氧树脂粉末喷射到钢筋表面。由于粉末颗粒带有电荷，便吸附在钢筋表面，并与其熔融结合，经过一定养护、固化后便形成一层完整、连续、包裹住整个钢筋表面的环氧树脂薄膜保护层。

参考标准：

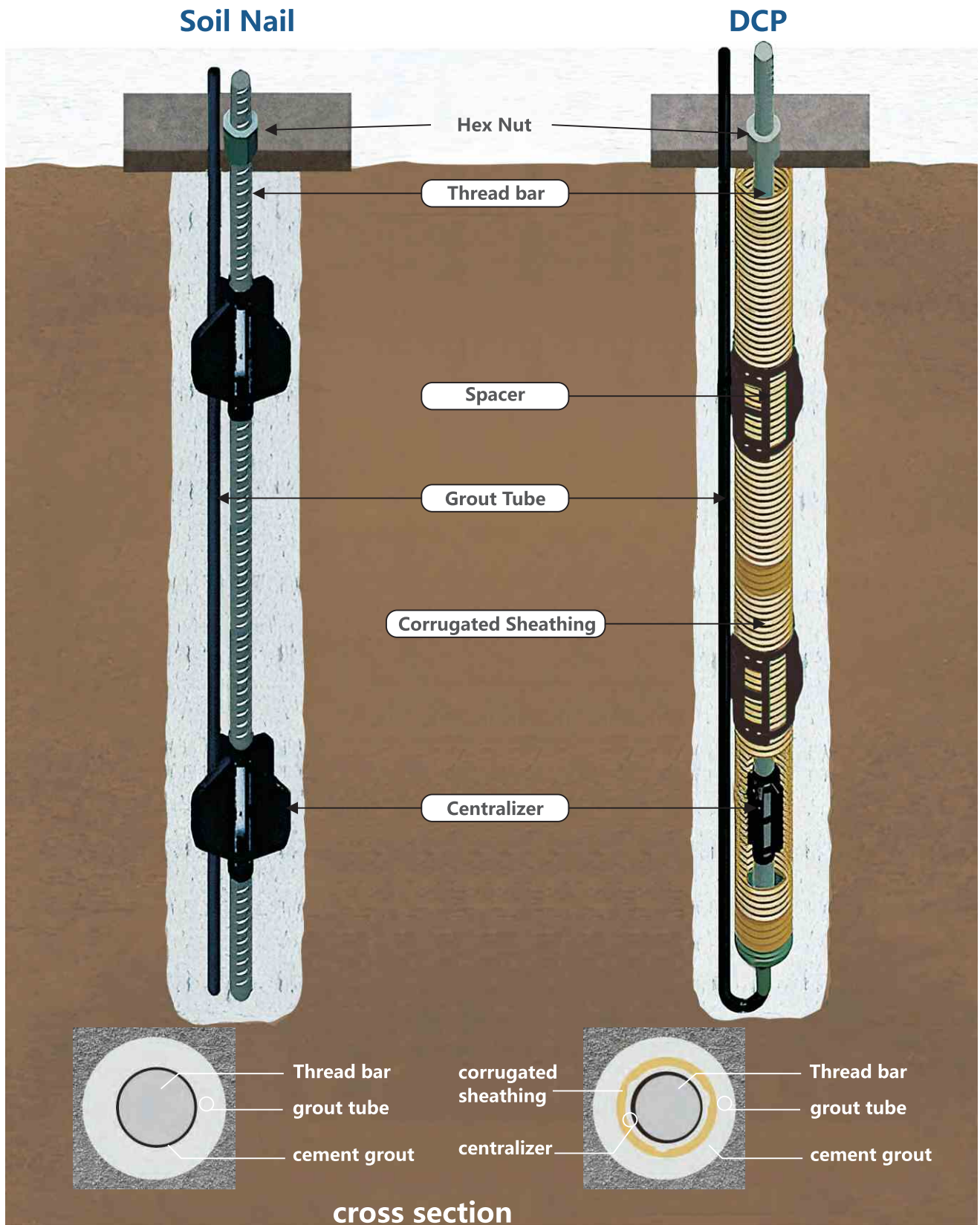
GB/T 25826-2010

A775/A775M - 19

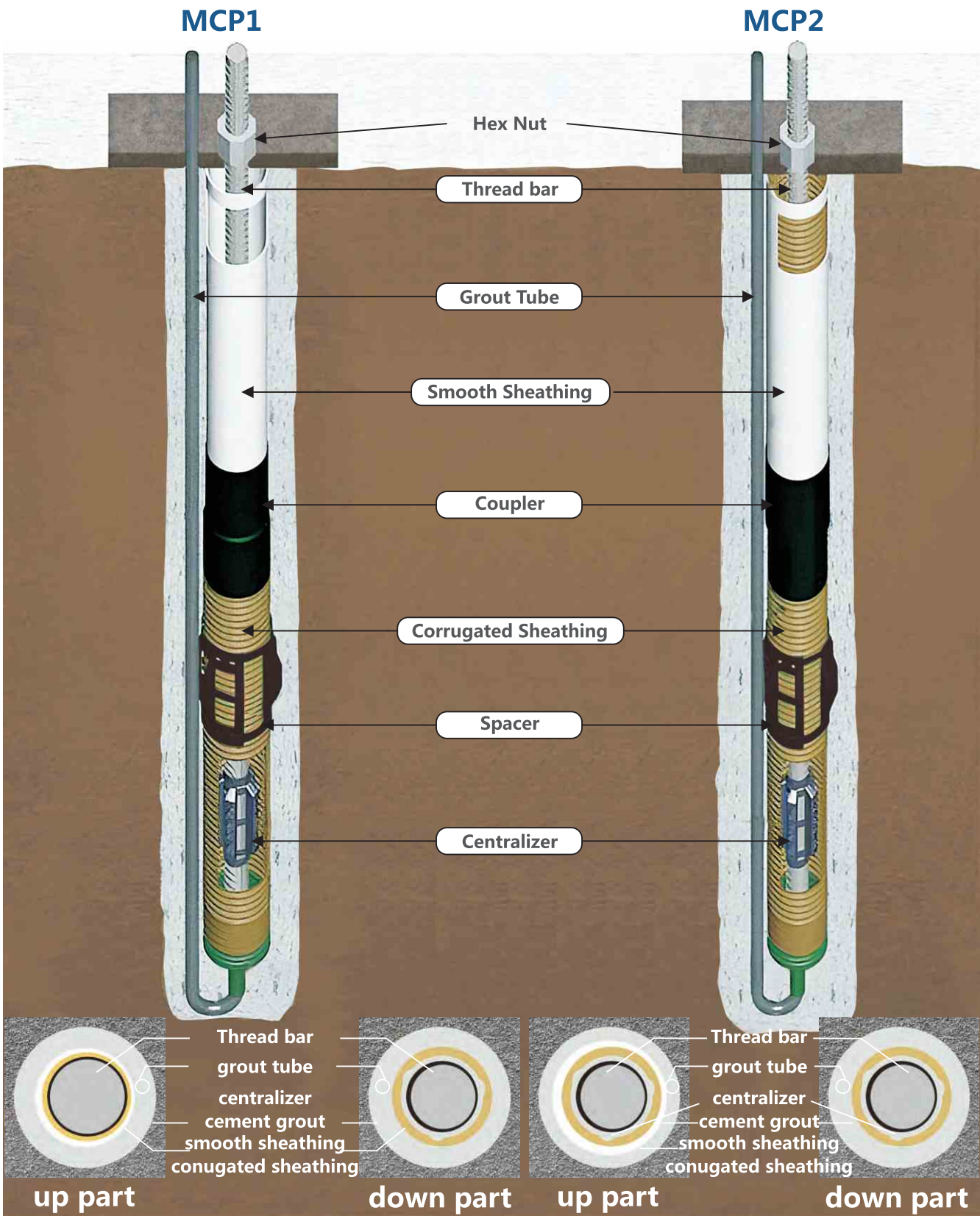
IS 13620 -1993

Soil Nail & DCP

土钉与双层防腐



DCP-Double Corrosion Protection DCP双重防腐



Yidao Stress Bar Hot Rolled Left-Hand Thread

倚道左旋精轧螺纹钢



Hot Rolled Left-Hand Thread

Description

Hot rolled bars with projections in the form of a helical thread with a wide pitch.

Technical rules

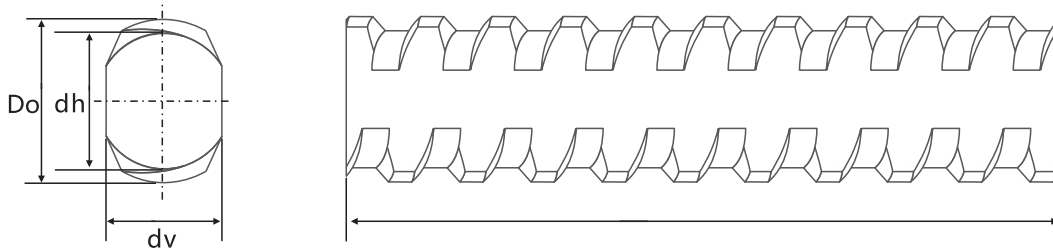
The Chemical Composition and Mechanical Properties, according to ASTM A615 Grade 75.

Presentation

They are produced in the nominal diameters of 19 mm, 22 mm, 25 mm and 32 mm; and in lengths of 9 and 12 meters. They are also delivered to order in other lengths.

Use

They allow the control of underground and surface instabilities, as a reinforcement element. They are applied in mining and civil projects, due to their design and functionality advantages in controlling instabilities of the rock mass.

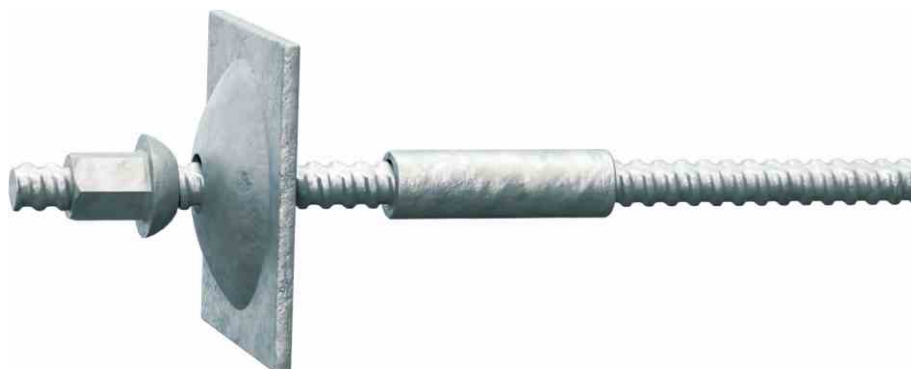


Dimensiones

Diameter	Do (mm)	dh/mm		dv/mm		Yield Stress [KN]	Ultimate Stress [KN]	Weight (kg/m)
		Size	Tolerance	Size	Tolerance			
19	21.5	18.3	—	17.7	—	[146]	[195]	2.19
20	22.1	19.5	±0.4	19.1	±0.5	[157]	[198]	2.47
25	28.2	25.0	±0.4	25.0	+0.4-0.8	[246]	[309]	4.10
28	30.9	27.3	±0.4	26.8	+0.4-0.8	[308]	[388]	5.10
32	36.0	32.0	±0.4	32.0	+0.4-1.2	[402]	[507]	6.65
36	40.4	36.0	±0.5	36.0	+0.4-1.2	[509]	[641]	8.41
40	45.0	40.0	±0.5	40.0	+0.4-1.2	[629]	[792]	10.34
50	56.0	50.0	±0.5	50.0	+0.4-1.2	[982]	[1237]	16.28
63.5	69.5	63.5	±0.5	63.5	+0.4-1.2	[1584]	[1995]	26.5

Domed Nut / Plate

左旋钢筋锚具



Description

It is a nut made of steel or nodular cast iron with spheroidal graphite, which complements the Helical Bar.

Presentation

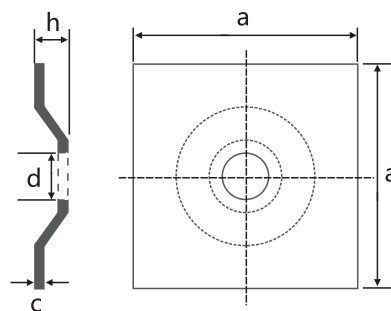
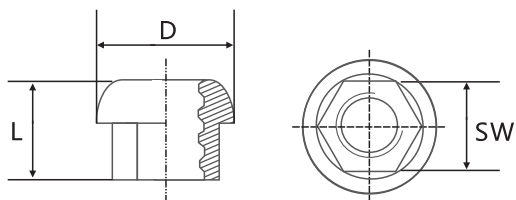
It is commercialized in the nominal diameters of 19mm, 22mm, 25mm and 32mm.

Use

Attachment of the Helicoidal Bar Anchor bolt, allows the positioning of the Clamping Plate on the rock mass

Diameter

19, 22, 25, 32mm or as customer' s drawing



左旋钢筋配套螺母

Dia (mm)	SW (mm)	L (mm)	D (mm)	Weight (kg)	Materia
19	31	40	44	0.29	45#
20	32	45	50	0.32	45#
25	38	51	50	0.37	45#
28	44	58	60	0.40	45#
32	50	65	60	0.68	45#

左旋钢筋配套垫板

Dia (mm)	a (mm)	c (mm)	d (mm)	h (mm)	Weight (kg)	Materia
19	120	5	37	25	0.56	Q235
20	120	8	38	28	0.90	Q235
25	150	10	38	31	1.76	Q235
28	150	10	45	33	1.76	Q235
32	200	12	45	35	3.76	Q235

Anchor Bolt/Smooth Thread Bar/High Strength Thread rod 风电锚栓/高强度双头

Diameter: ϕ M20-150

Grade: 8.8 , 10.9 , 12.9

Material: 40CR , 35CrMoA , 42CrMoA , A193-B7

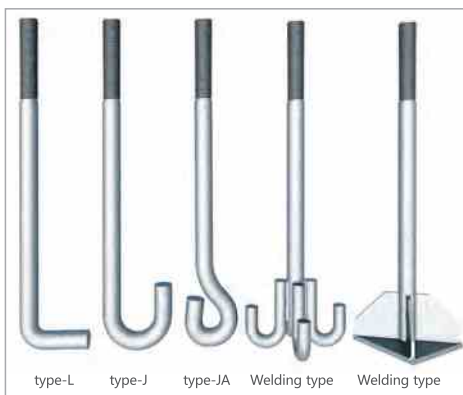


Anchor Bolt 地脚螺栓

Diameter : ϕ 15-150mm

Grade : 8.8 , 10.9 , 12.9

Material : 40Cr,35CrMoA,42CrMoA, A193-B7

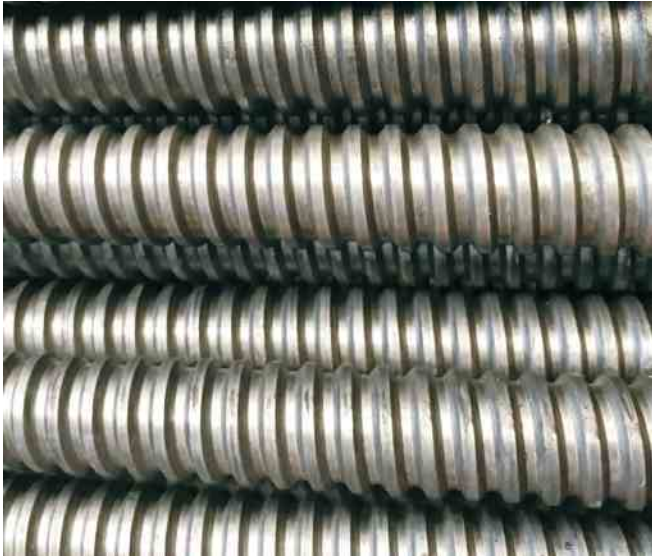


T Thread Rod T 型扣丝杆

Diameter : 15-150mm

Grade : 8.8 , 10.9, 12.9

Material : 40Cr , 35CrMoA , 42CrMoA

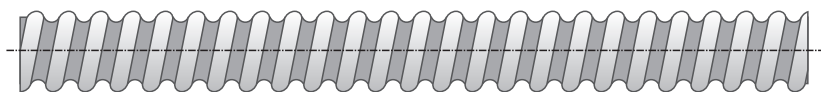


High Strength Thread Bar 高强度圆弧丝杆

Diameter: 15 , 20 , 25 , 32 , 36 , 40mm

Grade: Grade75 , 80 , 150

Material: 45# , 40Cr , 42Cr Mo



Packing & Shipping 包装发货

Bars: In bundles , 1.5-2ton



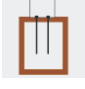









Accessory: 25KG/CTN , 36CTNS/Pallet , Wooden box

Yidao metal



Application- I

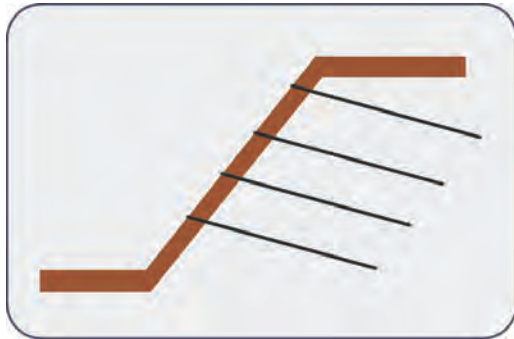
应用介绍

		Diameter [mm]	Yield Load [KN]	Ultimate Load [KN]	Weight [kg]	Cross-sectional area [mm ²]	A[%]	Agt[%]				
YD PSB500/630												
	Geotechnical system	20	157	198	2.47	314	≥10	≥3.5				
		25	246	309	4.1	491						
		28	308	388	5.1	616						
	Tunneling	32	402	507	6.65	804						
		36	509	641	8.41	1018						
		40	629	792	10.34	1257						
	Mining	50	982	1237	16.28	1963						
		63.5	1584	1995	26.5	3167						
		YD PSB670/800										
	Geotechnical systems	20	210	251	2.47	314	≥5	≥3.5				
		25	329	393	4.1	491						
		28	413	493	5.1	616						
	Tunneling & Mining	32	539	643	6.65	804						
		36	682	814	8.41	1018						
		40	842	1006	10.34	1257						
YD PSB830/1030												
	Formwork Tie	15	147	182	1.4	177			≥7	≥3.5		
		20	261	323	2.47	314						
		25	408	506	4.1	491						
	Geotechnical systems	28	511	643	5.1	616						
		32	667	828	6.65	804						
		36	845	1049	8.41	1018						
	Tunneling & Mining	YD PSB930/1080										
		25	457	530	4.1	491	≥7	≥3.5				
		28	573	665	5.1	616						
	Geotechnical systems	32	748	868	6.65	804						
		36	947	1099	8.41	1018						
		40	1169	1358	10.34	1257						
	Post-tensioning systems	50	1826	2120	16.28	1963						
		63.5	2945	3420	26.5	3167						
		75	4109	4771	36.9	4418						
YD PSB1080/1230												
	Geotechnical systems	25	530	604	4.1	491	≥6	≥3.5				
		28	665	758	5.1	616						
		32	868	989	6.65	804						
		36	1099	1252	8.41	1018						
	Post-tensioning systems	40	1358	1546	10.34	1257						
		50	2120	2414	16.28	1963						
		63.5	3420	3895	26.5	3167						
		75	4771	5434	36.9	4418						

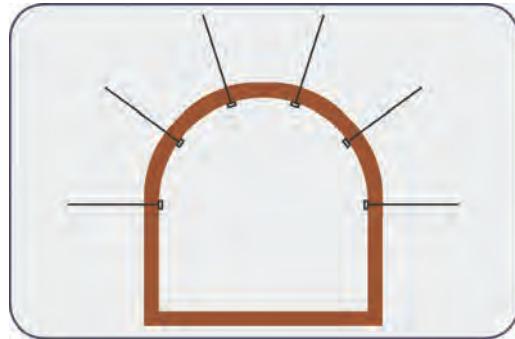
Accessories for all dimensions and applications available.

Application- II

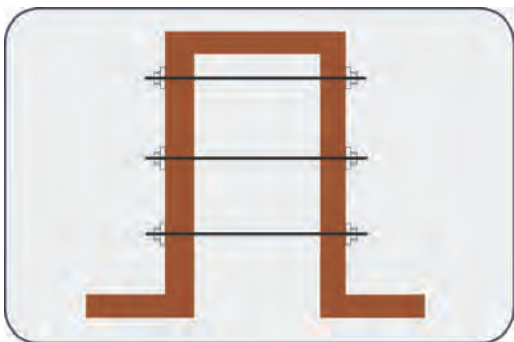
应用介绍



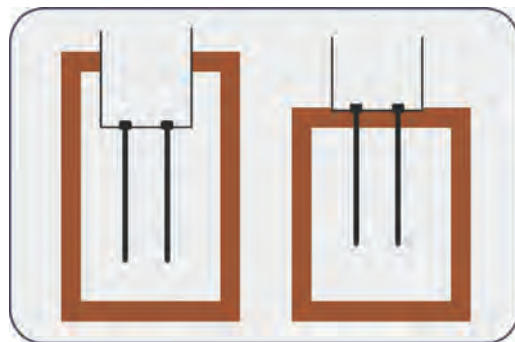
① **Soil nailing :**
securing slopes, harbor,
excavation, embankments



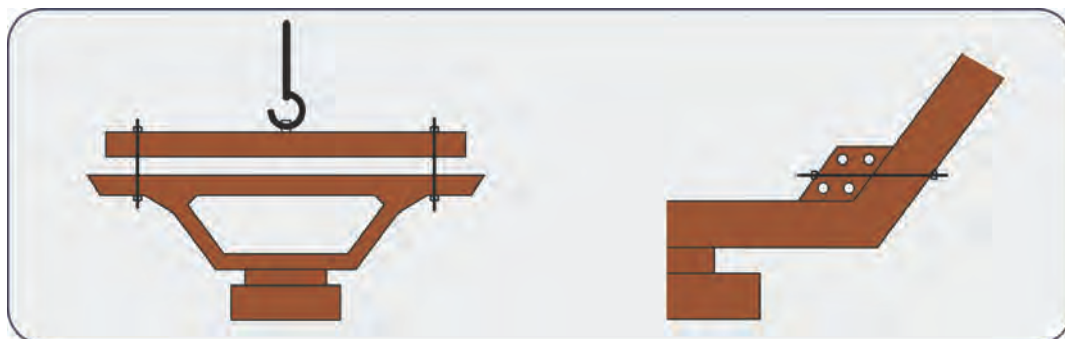
② **Rock bolts :**
Mining & Tunneling
retaining walls



③ **Formwork :**
Tie rod, Tie back



④ **Micropiles, ground anchors :**
Uplift force and tension loads,
compression piles



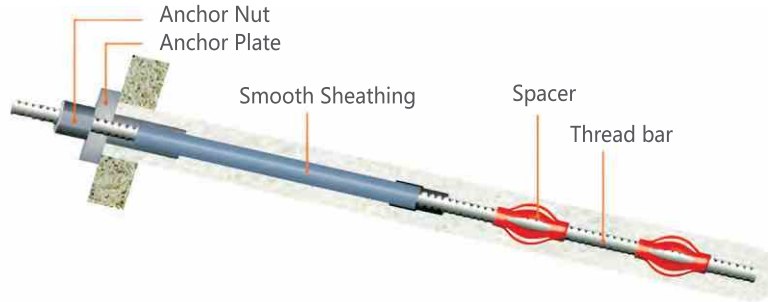
⑤ **Bridge :**
Post-tensioning, Form traveler, Lifting, Temporary and permanent works

⑥ **Other applications :**
Highway, railway, commercial buildings, tanks, car parks, wind energy structures

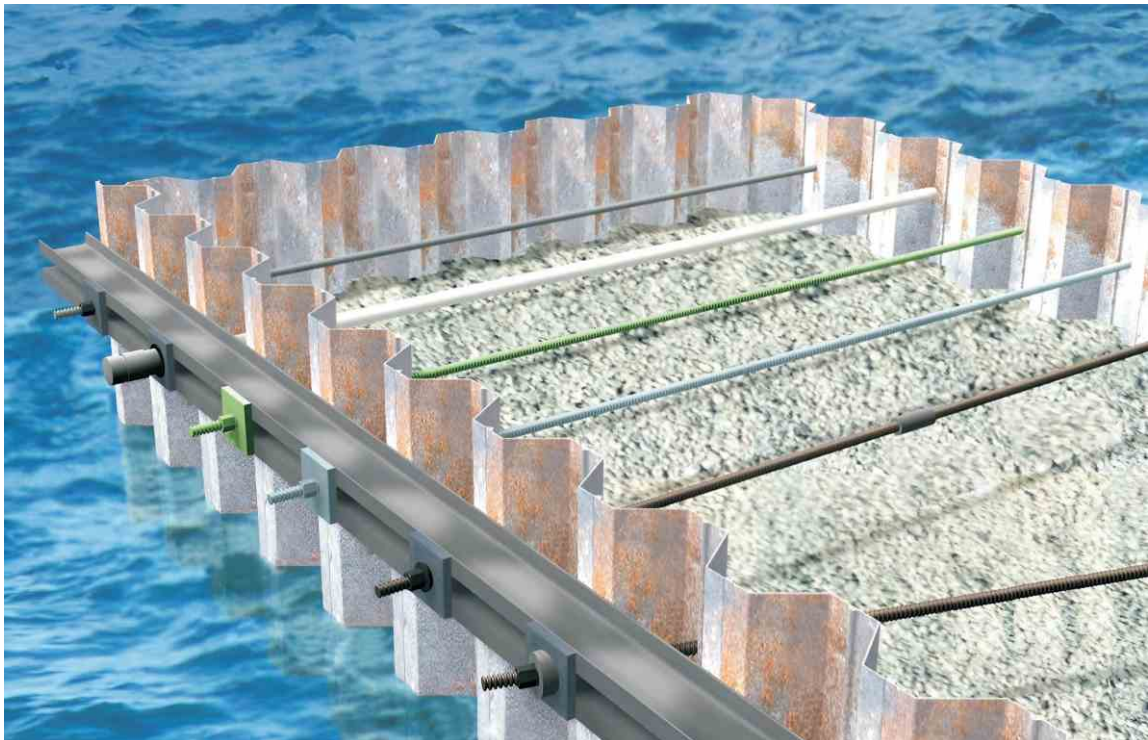
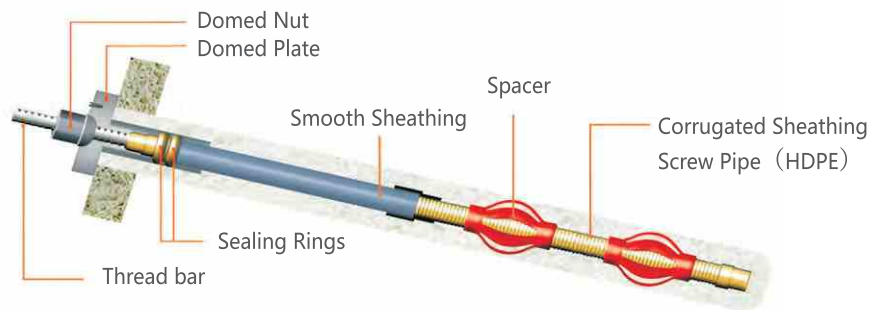
Application-III

应用介绍

Temporary Rock Bolts



Permanent Rock Bolts



Enterprise Qualification- I

企业资质



Enterprise Qualification- II

企业资质



Job Reference- I 工程案例

- Post Tensioning
- Form Works
- Geotechnical
- Ground Anchor
- Soil Nailing
- Tunneling
- Civil& structural engineering



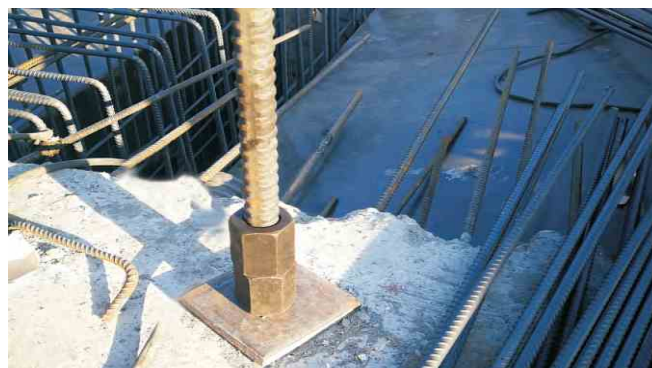
Grade: PSB500/630, PSB830/1030, PSB930/1080, PSB1080/1230 Mpa

Diameter: $\phi 15$, $\phi 20$, $\phi 25$, $\phi 28$, $\phi 32$, $\phi 36$, $\phi 40$, $\phi 50$, $\phi 63.5$

Application:

- ◆ Geotechnical system
- ◆ Rock bolt
- ◆ Ground anchor
- ◆ Bridge
- ◆ Form work
- ◆ Precast construction
- ◆ Civil and structural engineering

主要用于高速铁路、公路、隧道、边坡材料、抗浮基坑、桥梁建设等



Job Reference- II

工程案例

Shanxi Bode Railway : Post tensioning.

PT bar 32mm-PSB930Mpa 200tons , accessories 26000sets.

山西保德铁路：张拉

32mm-PSB930Mpa 钢筋200吨，配套锚具26000套



Shijiazhuang City Highway :

Form traveler, Post tensioning.

PT bar 32mm-PSB930Mpa 90tons,
accessories over 8000sets.

石家庄市内高速：挂篮，张拉

32mm-PSB930Mp 钢筋90吨
配套锚具8000多套



Job Reference-III 工程案例

Shanxi Tai-hang Mountains Highway:
Form traveler, Post tensioning.
PT bar 32mm-PSB930Mpa 60tons,
accessories over 2310sets.

山西太行山高速：挂篮，张拉
32mm-PSB930Mpa钢筋60吨，
配套锚具2310套



Greece :
Soil nailing/slope stability.
HDG finish 25mm-PSB830Mpa full
thread bar and accessory 100 tons.

希腊：边坡支护
25mm-PSB830Mpa
热镀锌钢筋配套锚具合计100吨



Job Reference-IV 工程案例

Vietnam:

Rock bolt/Anchor bar for slope
stabilization HDG finish 32mm-PSB500
rock bolt and accessories 400tons

越南：边坡锚固

32mm-PSB500Mpa/热镀锌钢筋和配件合计
400吨。



Job Reference- V

工程案例

Malaysia:

Post tension bar for Bridge Girder erection machine
Plain finished 40mm-PSB1080 with heavy dome nut and round spherical plate total 1000sets

马来西亚

架桥机用40mm-PSB1080精轧螺纹钢配套重型蘑菇头螺母和圆形锥垫板合计1000套。



Fuzhou Pingtan Strait Highway and railway Bridge

Which built by Fujian Branch of China Railway Bridge Bureau, used 100tons of 32mm-PSB830 high strength thread bars and 500sets accessories

福州平潭海峡公铁大桥

由中铁建大桥局(福建)承建共使用精轧螺纹钢32mm-PSB830100吨，配件500套。

Job Reference- VI 工程案例

Yanziying Bridge:

This project in Chengde Hebei built by China Mcc22 Group Corp.,Ltd used 150tons of 32mm-930 high strength thread bar and 10000sets of accessories

中国二十二冶集团有限公司河北承德门营子大桥
使用32mm-PSB930精轧螺纹钢150吨和锚具10000套。



Binjiang Xincheng Mountain Bridge:

This project in Jiangsu Free Zone(Jingangtown) used 50tons of high strength thread bar and 1500sets of accessories

斌江新城镇山路大桥

该项目位于江苏保税区金港镇共使用钢筋50吨，锚具1500套。

Job Reference-VII 工程案例

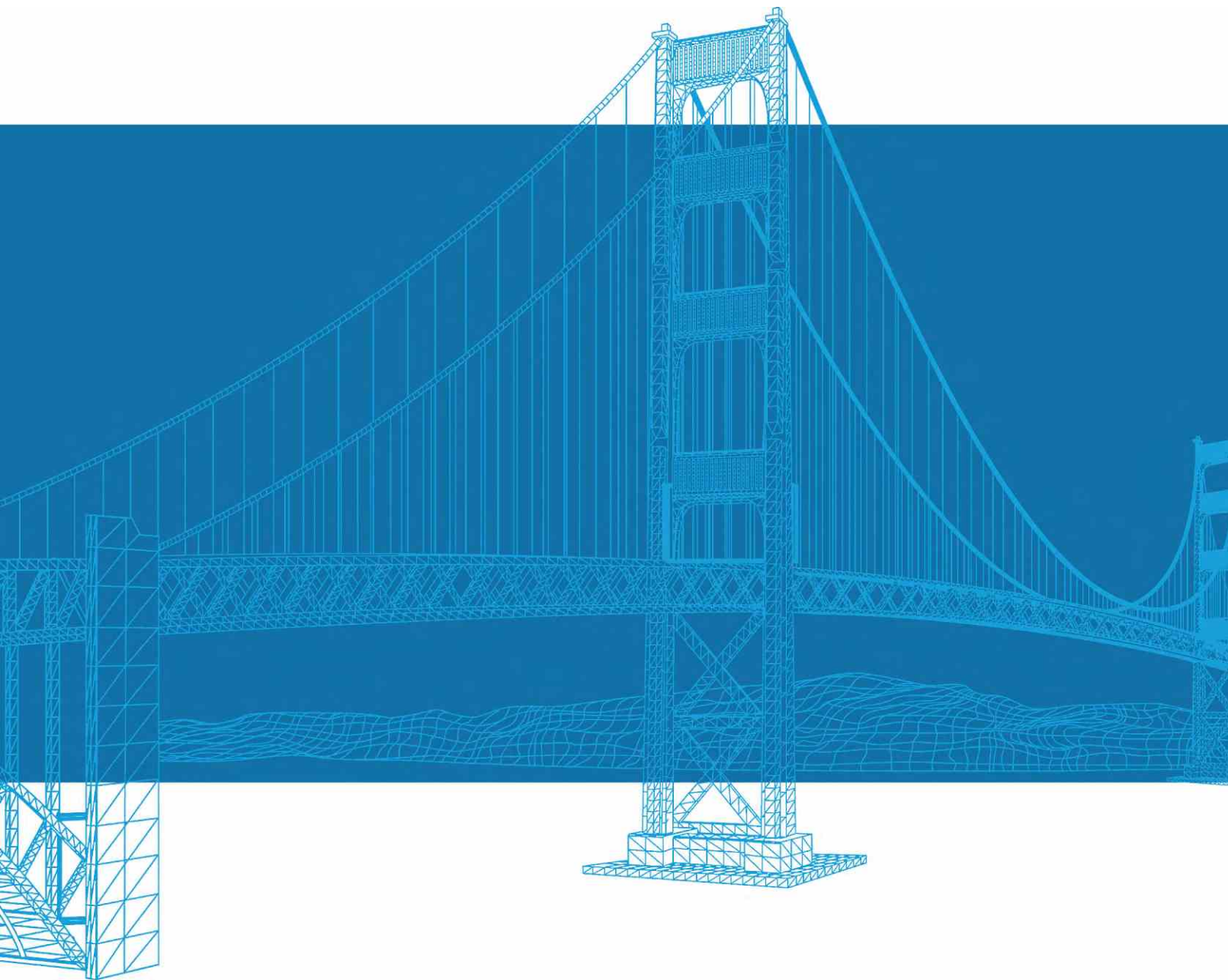
Macau light rail C370 project contracted by China Railway 15th Bureau

A total of 220 tons 25mm-PSB830 high strength thread bar were used in 3073-meter construction area of Macau light rail C370 project

中铁十五局集团澳门轻轨：

C370项目3073m施工区高架桥节段箱梁拼装共92跨共使用25mm-PSB830精轧螺纹钢220吨。





Quality · Reliability · Innovation

精益求精 以质取胜



Yidao always focus on global marketing, supplying quality products and best service, establishing good relationship with worldwide partners.

HANDAN YIDAO METAL PRODUCTS CO.,LTD

邯郸市倚道金属制品有限公司

营销中心/

河北省邯郸市丛台区联纺东路183号德源大厦

生产基地/

河北省邯郸市永年县段庄工业园

Headquater/

Deyuan Building, No. 183 Lianfang East Road, Handan, Hebei
China 056004

Production Base/

Duanzhuang Industrial Zone, Yongnian, Handan, Hebei, China

www.yidao-metal.com